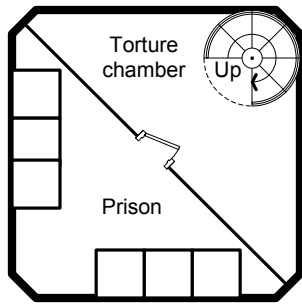
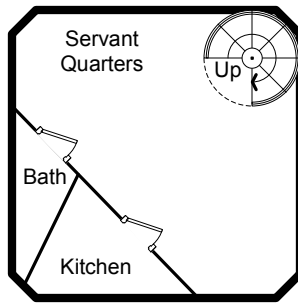


Basement



Floor 1

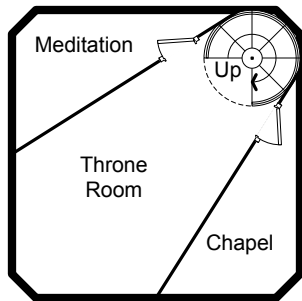


Floor 2

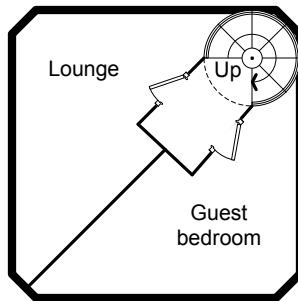


Prison

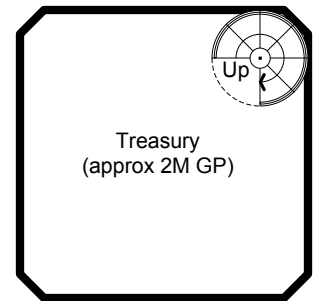
Floor 3



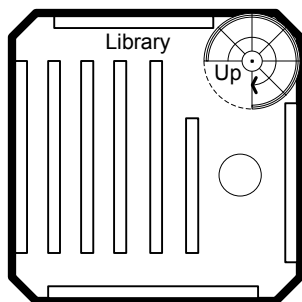
Floor 4



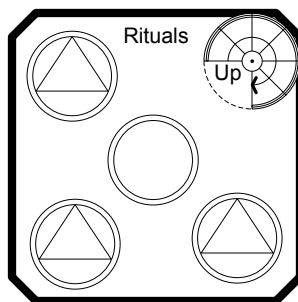
Floor 5



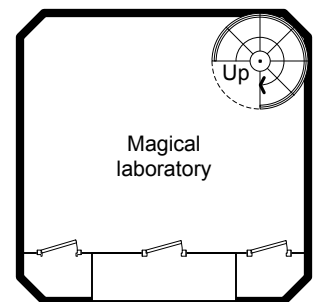
Floor 6



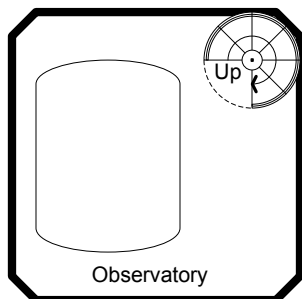
Floor 7



Floor 8



Roof



- 8 stories tall (+ roof), each story 25' tall, equals a 200' tall tower.
- Each story is 30' x 30' (or 6 squares by 6 squares.)
- Outside of tower is a series of rotating cogs, with each story rotating off-center in a different direction. The door is on the second floor, with a rising platform of gears rising as an elevator outside.
- No visible windows; sections of gears can become transparent with a cantrip.

- Basement: jail and torture
- Floor 1: Meditation room, staff quarters
- Floor 2: Entrance and trophies
- Floor 3: Throne room, chapel, meditation
- Floor 4: Living and socializing
- Floor 5: Treasury
- Floor 6: Library
- Floor 7: Summoning and ritual circles
- Floor 8: Magical laboratory
- Roof: Star divination platform